

Jones Pond

Survey Date: June 4, 2020

Last Surveyed: 2017

Survey Team: S. Aveson, C. Vara

Lake Description

Jones Pond is 155-acres and has 4.15-miles of shoreline. It is located in the town of Brighton, Franklin County and lies in the St. Lawrence watershed. The team launched one motorboat at the Jones Pond NYSDEC boat launch, located at the northern end of the pond.

Aquatic Invasive Plant Presence

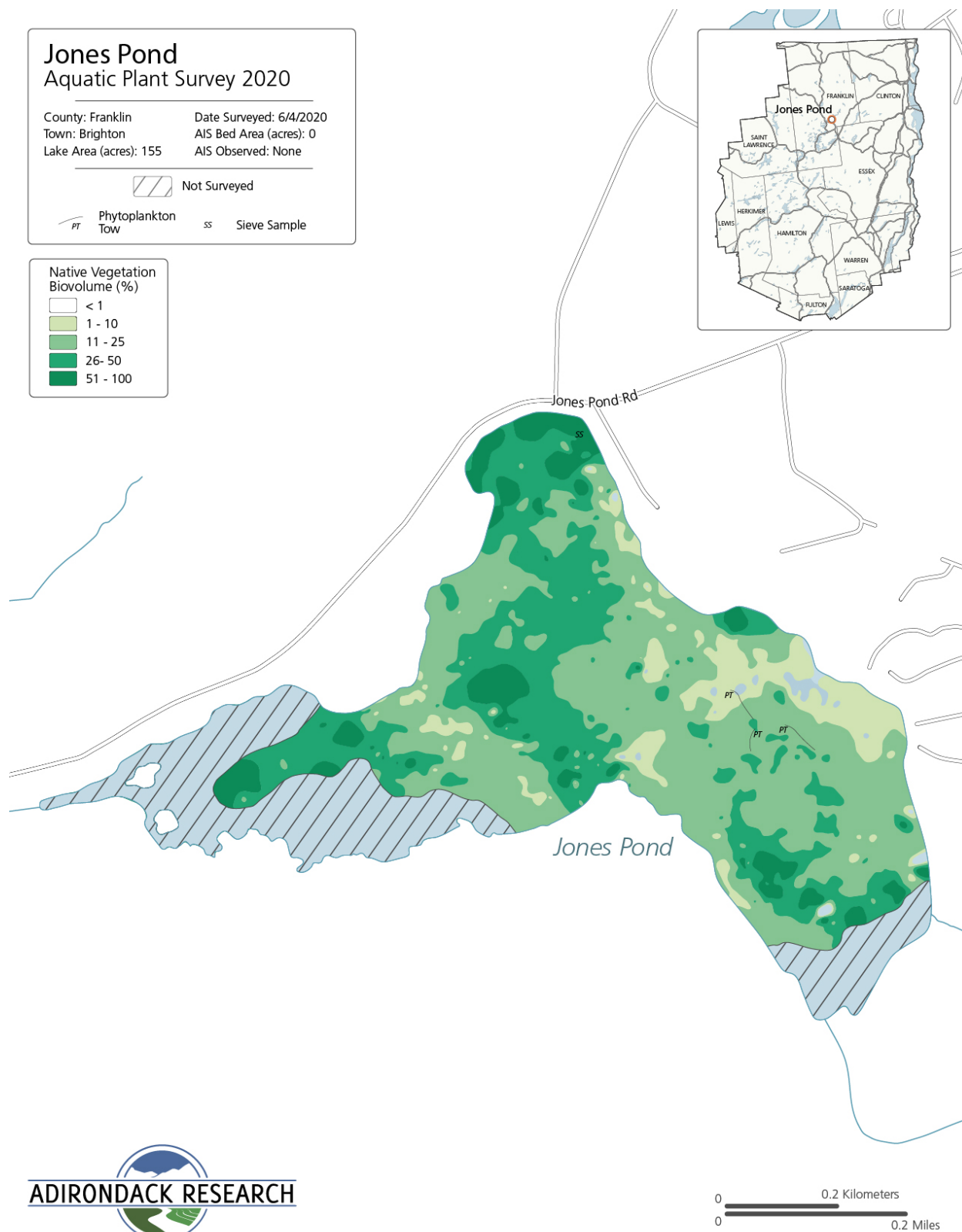
No invasive plants were detected.

Native Plant Biota

Comprehensive surveys of all the native plants found within the lake were not prioritized in 2020 as this data has previously been collected in 2017. A combination of native floating and submerged plants was detected. These species include: *Brasenia schreberi* (watershield), *Nuphar variegata* (spatterdock), *Chara* spp. (muskgrass), *Vallisneria americana* (eel grass), *Potamogeton praelongus* (white-stem pondweed), *Potamogeton robbinsii* (Robbins' pondweed), *Potamogeton perfoliatus* (clasping-leaf pondweed), *Elodea canadensis* (common waterweed), and *Utricularia macrorhiza* (common bladderwort). Robbins' pondweed was the most common and abundant native plant observed, representing around 80% of the native vegetative seen.

Aquatic Invasive Animal Presence

Sediment sieves were taken to determine the presence of *Corbicula fluminea* (Asian clams). None were found. Three plankton tows were also conducted with no invasive zooplankton detected.



Jones Pond Aquatic Plant Survey 2020

County: Franklin
Town: Brighton
Lake Area (acres): 155

Date Surveyed: 6/4/2020
AIS Bed Area (acres): 0
AIS Observed: None

PT Phytoplankton Tow SS Sieve Sample

Bathymetry (ft)

