

## Lake Colby

**Survey Date:** July 6-7, 2020

**Last Surveyed:** 2017

**Survey Team:** C. Vara, T. Firkins

### Lake Description

Lake Colby is approximately 310-acres and has 3.86 miles of shoreline. It is located in the town of Saranac Lake, Franklin County and lies in the St. Lawrence watershed. The team launched one motorboat at the NYSDEC State boat launch located off of NYS Rt. 30 outside of Saranac Lake.

### Aquatic Invasive Plant Presence

*Myriophyllum spicatum* (Eurasian watermilfoil) was the only aquatic invasive species found as well as in Little Colby Pond.

### Native Plant Biota

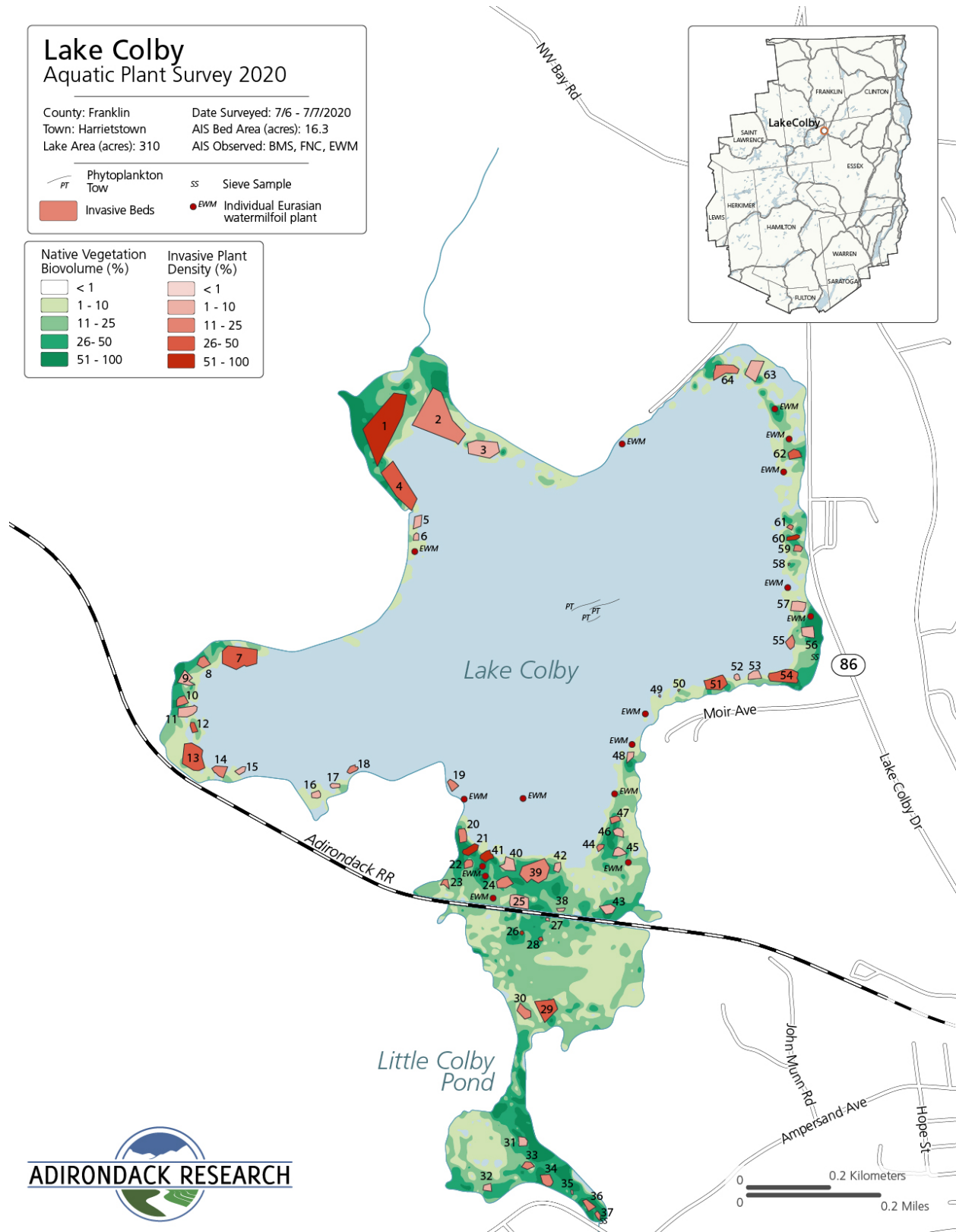
Comprehensive surveys of all the native plants found within the lake, data has previously been collected in 2017. A combination of native floating and submerged plants was detected. These species include: *Brasenia schreberi* (watershield), *Nuphar variegata* (spatterdock), *Vallisneria americana* (eel grass), *Potamogeton praelongus* (white-stem pondweed), *Potamogeton amplifolius* (large-leaf pondweed), *Potamogeton robbinsii* (Robbins' pondweed), *Elodea canadensis* (common waterweed), *Utricularia macrorhiza* (common bladderwort), *Potamogeton richardsonii* (clasping-leaf pondweed), *Nymphaea odorata* (white water lily), *Pontederia cordata* (pickerelweed), *Utricularia intermedia* (flat-leaf bladderwort), *Utricularia minor* (small bladderwort), *Fontinalis* (aquatic moss), and *Najas gracillima* (northern naiad).

### Aquatic Invasive Animal Presence

Sediment sieves were taken to determine the presence of *Corbicula fluminea* (Asian clams), none were found. *Sphaerium corneum* (fingernail clams) were found at the Little Colby Pond soft launch. *Viviparus georgianus* (banded mystery snail) were found at the soft launch and areas throughout the lake with several floating snails detected. Three plankton tows were also conducted with no invasive zooplankton detected.

## Lake Colby Invasive Species Percent Cover (See map on adjacent page)

Eurasian watermilfoil				Eurasian watermilfoil				Eurasian watermilfoil			
Bed	Size (Ac.)	Size (Sq. Ft.)	% Cover	Bed	Size (Ac.)	Size (Sq. ft)	%	Bed	Size (Ac.)	Size (Sq. Ft.)	% Cover
1	2.29	99589.68	51-100	24	0.21	8967.66	11-25	47	0.08	3657.75	11-25
2	2.14	93252.52	11-25	25	0.35	15178.0	1-10	48	0.08	3496.55	1-10
3	0.67	29280.66	1-10	26	0.02	766.62	51-	49	0.01	255.06	1-10
4	1.11	48537.84	26-50	27	0.01	626.81	1-10	50	0.01	224.53	1-10
5	0.13	5648.61	1-10	28	0.02	930.67	26-50	51	0.37	16123.66	26-50
6	0.05	2295.17	1-10	29	0.47	20617.6	26-50	52	0.04	1916.59	1-10
7	0.99	43197.73	26-50	30	0.19	8229.47	11-25	53	0.14	5881.34	1-10
8	0.15	6396.18	11-25	31	0.11	4835.02	1-10	54	0.48	21040.11	26-50
9	0.20	8812.47	1-10	32	0.08	3460.36	1-10	55	0.12	5357.61	11-25
10	0.13	5548.49	11-25	33	0.09	4084.60	11-25	56	0.19	8333.11	1-10
11	0.25	10957.88	1-10	34	0.17	7379.43	11-25	57	0.20	8887.92	1-10
12	0.08	3442.05	26-50	35	0.01	478.83	1-10	58	0.00	200.00	1-10
13	0.71	31140.33	26-50	36	0.12	5018.77	11-25	59	0.07	3150.32	11-25
14	0.18	7756.10	11-25	37	0.04	1943.88	11-25	60	0.08	3450.47	51-100
15	0.08	3320.16	1-10	38	0.03	1483.89	1-10	61	0.03	1406.58	11-25
16	0.08	3575.12	1-10	39	0.75	32851.3	11-25	62	0.14	6267.25	26-50
17	0.06	2623.32	1-10	40	0.22	9397.55	1-10	63	0.36	15775.04	1-10
18	0.09	3736.43	11-25	41	0.15	6573.29	51-	64	0.36	15467.18	11-25
19	0.11	4745.50	11-25	42	0.08	3702.31	1-10				
20	0.15	6598.89	11-25	43	0.16	6927.52	1-10				
21	0.16	7096.64	51-100	44	0.05	2273.18	11-25				
22	0.09	4058.45	11-25	45	0.12	5381.15	1-10				
23	0.06	2723.04	11-25	46	0.11	4681.44	1-10				
								Asian Clam		Spiny Waterflea	
								Present (Y/N)		Present (Y/N)	
								No		No	



## Lake Colby Aquatic Plant Survey 2020

County: Franklin      Date Surveyed: 7/6 - 7/7/2020  
 Town: Harrietstown      AIS Bed Area (acres): 16.3  
 Lake Area (acres): 310      AIS Observed: BMS, FNC, EWM

PT Phytoplankton TOW      SS Sieve Sample

### Bathymetry (ft)

