

Mirror Lake

Survey Date: July 9, 2020

Last Surveyed: 2019

Survey team: P. Bly, T. Firkins

Lake Description

Mirror Lake is a 124-acre lake with 2.45-miles of shoreline. It is located in the village of Lake Placid, Franklin County and lies in the St Lawrence River Watershed. The team hand launched a canoe via the north end of the lake.

Aquatic Invasive Plant Presence

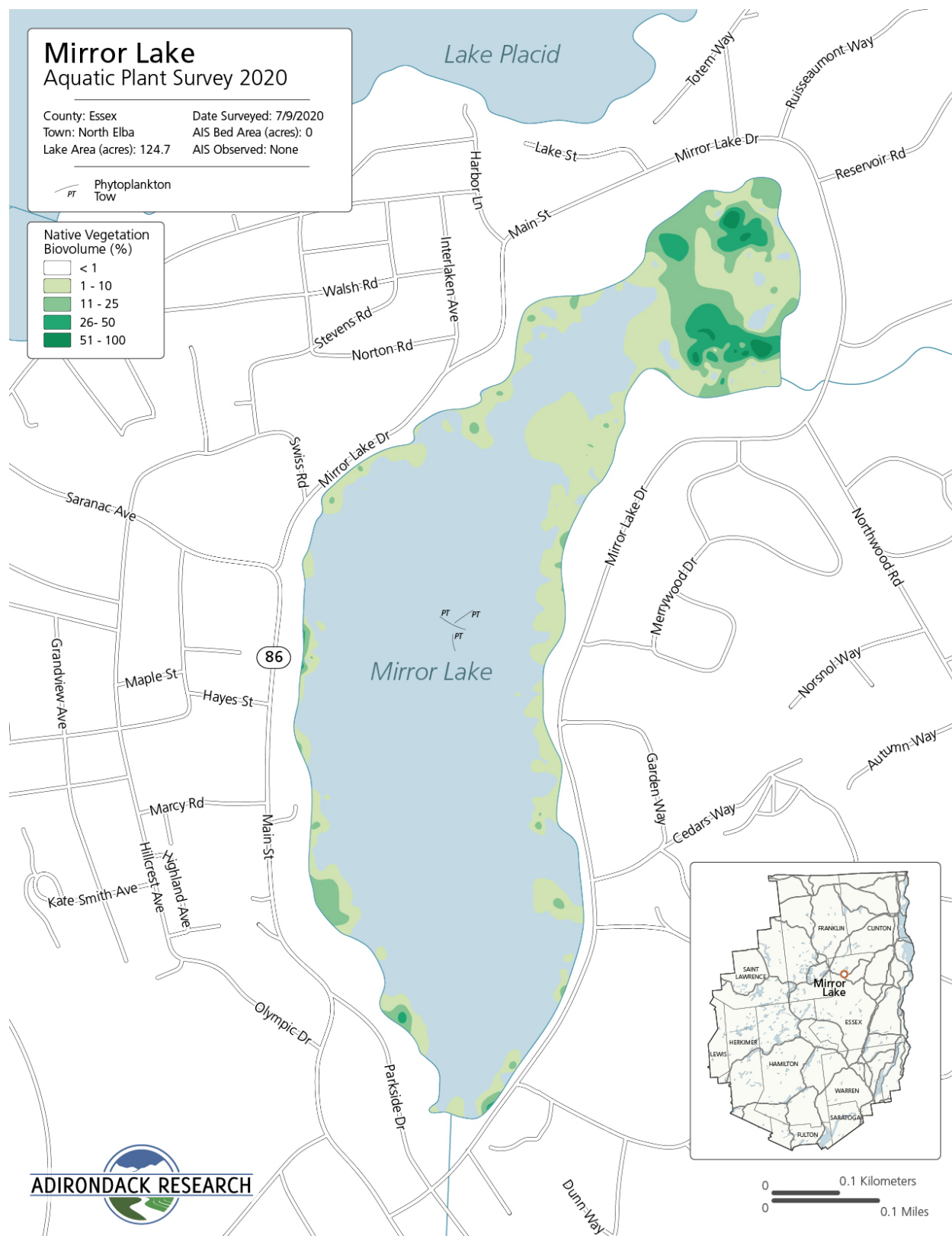
No invasive plants were detected.

Native Plant Biota

Comprehensive surveys of all native plants found within the lake were recorded. Native plants detected included: *Nymphaea odorata* (white water lily), *Brasenia schreberi* (watershield), *Nuphar lutea* (spatterdock), *Potamogeton amplifolius* (large-leaf pondweed), *Sparganium angustifolium* (narrow-leaf bur-reed).

Aquatic Invasive Animal Presence

Sediment sieves were taken to determine the presence of *Corbicula fluminea* (Asian clams). None were found. Three plankton tows were also conducted with no invasive zooplankton detected.



Moose Pond

Survey Date: August 17, 2020, August 18, 2020

Last Surveyed: 2017

Survey Team: C. Lloyd, S. Aveson

Lake Description

Moose Pond is 163-acres and has 3.3-miles of shoreline. It is located in the town of Saint Armand, Essex County and lies in the St. Lawrence Watershed. The team launched one canoe at the Moose Pond DEC boat launch located in Bloomingdale off Franklin Falls Road.

Aquatic Invasive Plant Presence

No invasive plants were detected.

Native Plant Biota

Comprehensive surveys of all native plants found within the lake were not prioritized in 2020 as this data has previously been collected in 2017. Species observed included: *Vallisneria americana* (eel grass), *Nuphar variegata* (spatterdock), *Potamogeton amplifolius* (large leaf pondweed), *Potamogeton Sparganium* spp. (bur-reed) and *Potamogeton natans* (floating-leaf pondweed).

Aquatic Invasive Animal Presence

Three plankton tows were also conducted with no invasive zooplankton detected. Sediment sieves were taken to determine the presence of *Corbicula fluminea* (Asian clams). None were detected. *Cipangopaludina chinensis malleata* (Chinese mystery snail) were detected adjacent to the boat launch.

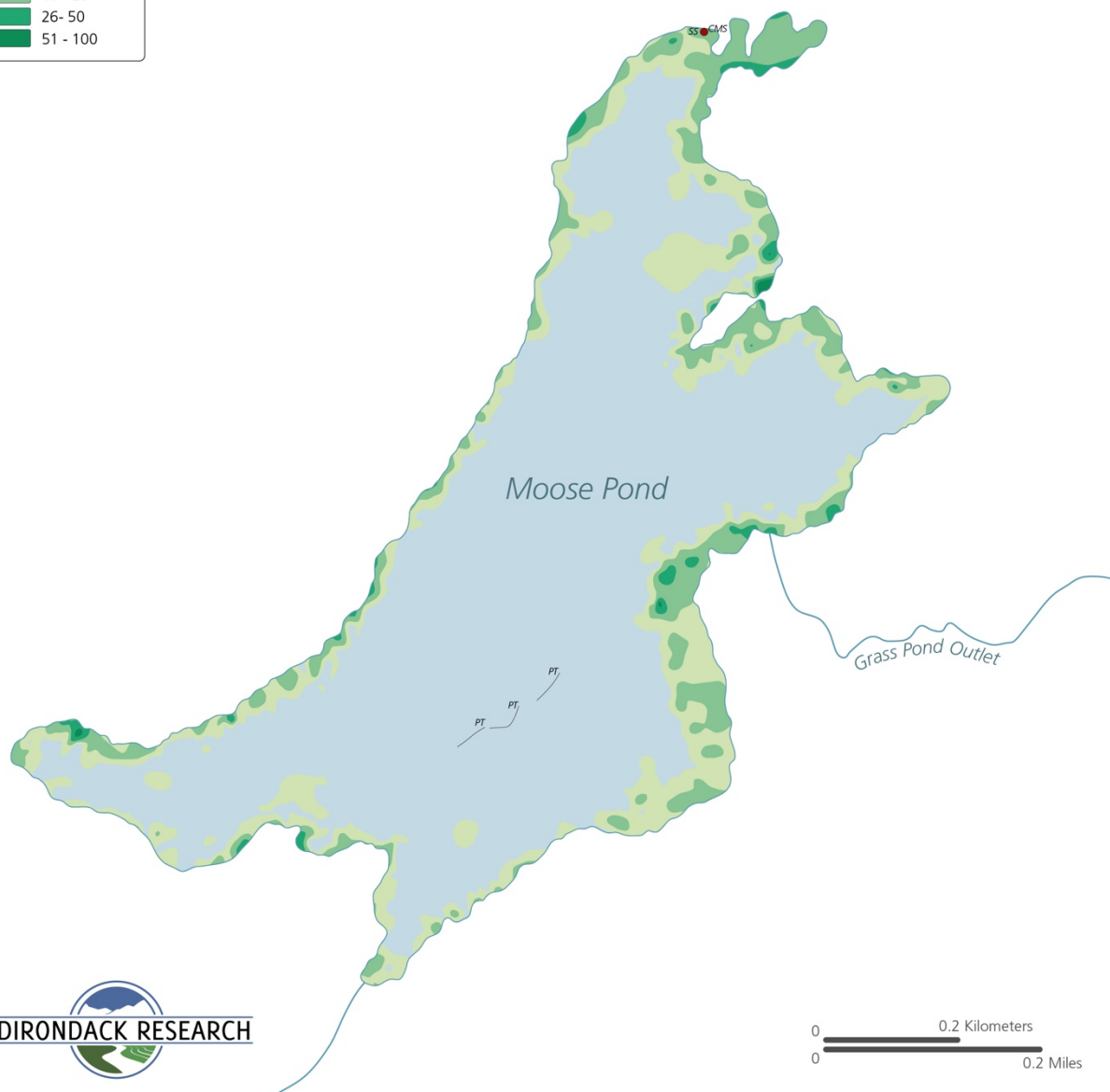
Moose Pond Aquatic Plant Survey 2020

County: Essex Date Surveyed: 8/17-18/2020
 Town: St. Armand AIS Bed Area (acres): 0
 Lake Area (acres): 163 AIS Observed: CMS

PT Phytoplankton Tow SS Sieve Sample
 CMS Chinese mystery snail

Native Vegetation Biovolume (%)

< 1
 1 - 10
 11 - 25
 26 - 50
 51 - 100



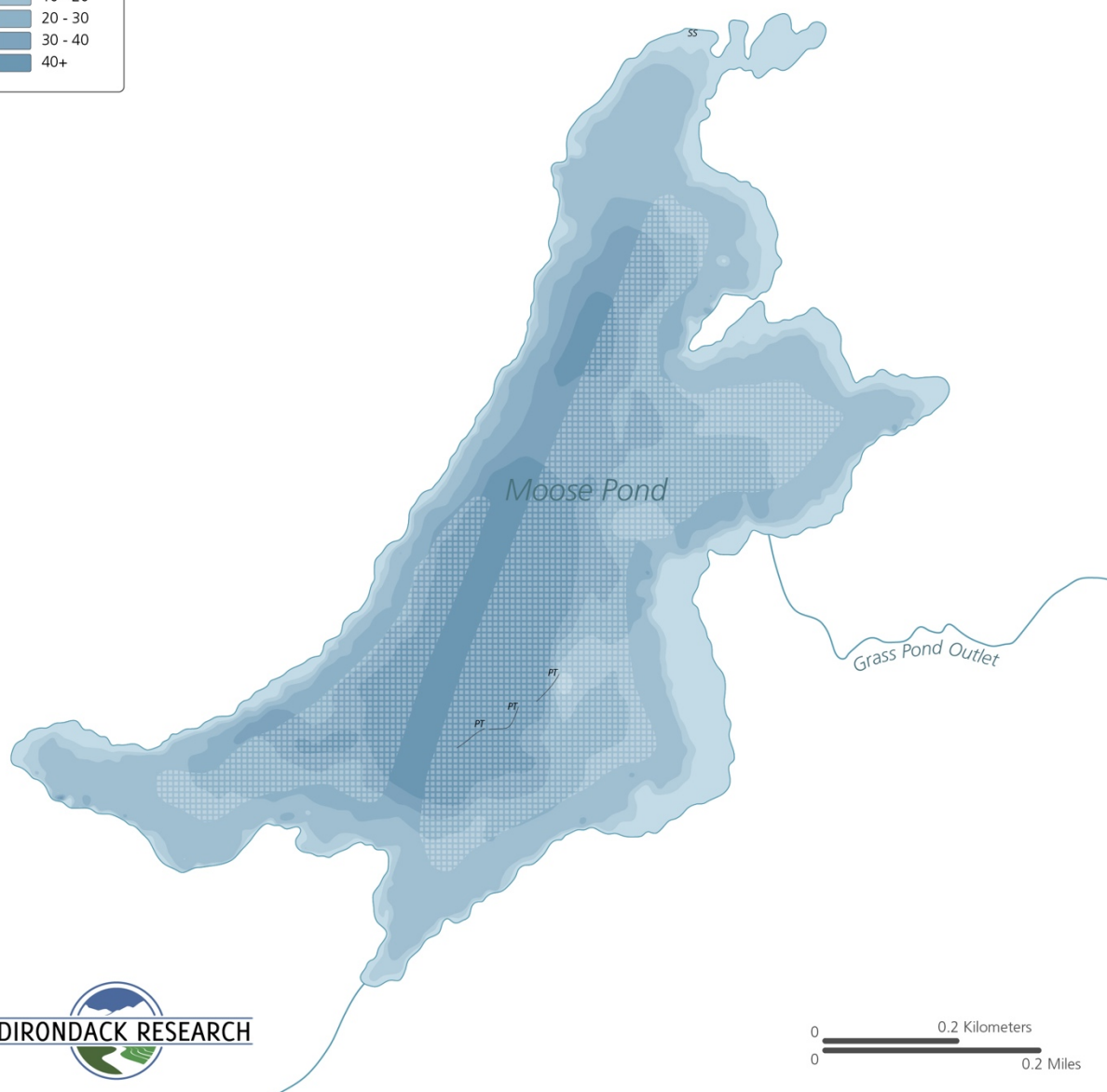
Moose Pond Aquatic Plant Survey 2020

County: Essex Date Surveyed: 8/17-18/2020
 Town: St. Armand AIS Bed Area (acres): 0
 Lake Area (acres): 163 AIS Observed: CMS

PT Phytoplankton Tow SS Sieve Sample
 Excessively Interpolated

Bathymetry (ft)


0 - 5
 5 - 10
 10 - 20
 20 - 30
 30 - 40
 40+



0 0.2 Kilometers
 0 0.2 Miles

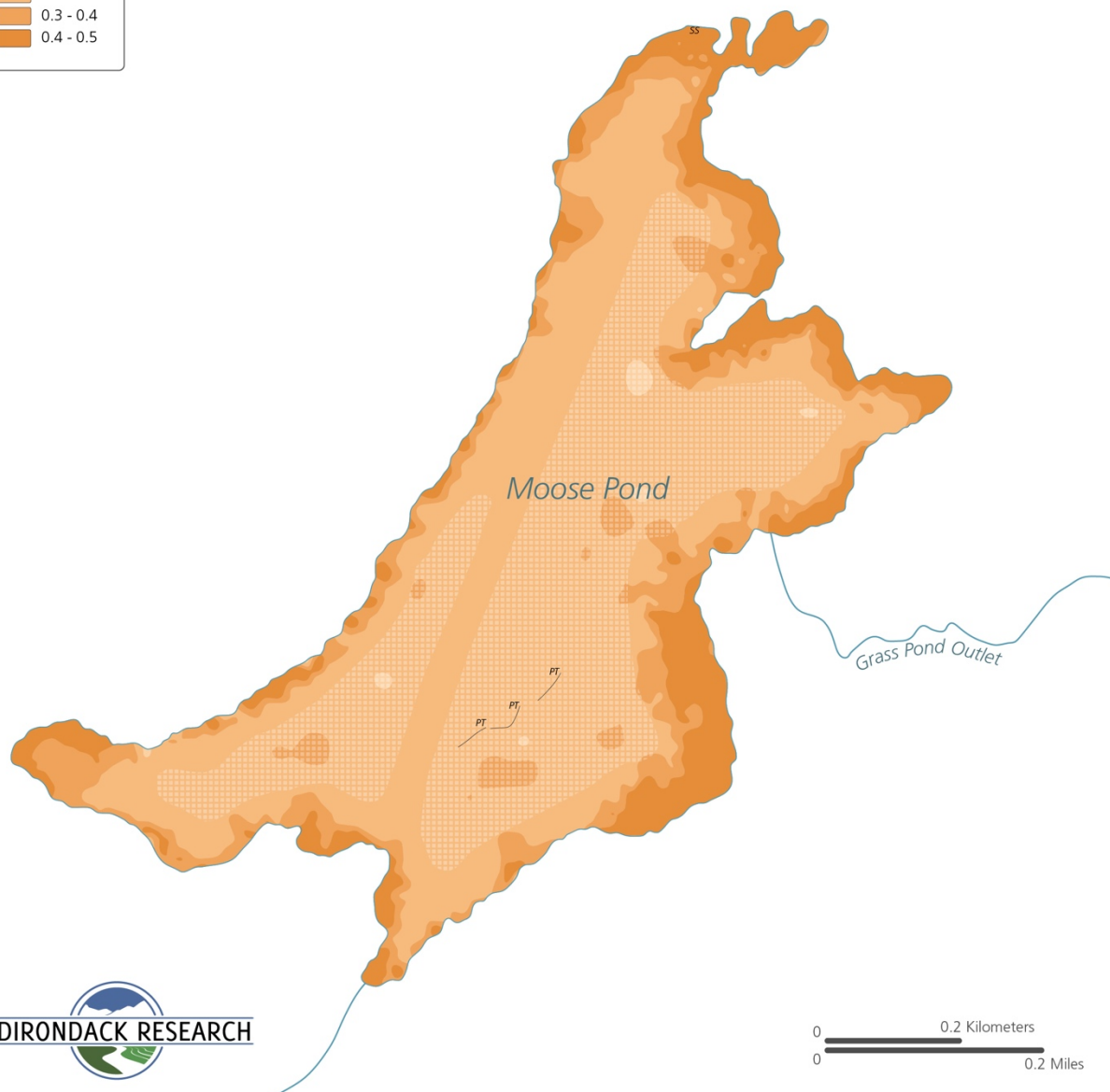
Moose Pond Aquatic Plant Survey 2020

County: Essex Date Surveyed: 8/17-18/2020
 Town: St. Armand AIS Bed Area (acres): 0
 Lake Area (acres): 163 AIS Observed: CMS

PT Phytoplankton Tow SS Sieve Sample
 Excessively Interpolated

Hardness

0 - 0.1
 0.1 - 0.2
 0.2 - 0.3
 0.3 - 0.4
 0.4 - 0.5



0 0.2 Kilometers
 0 0.2 Miles