

## Moose Pond

**Survey Date:** August 17, 2020, August 18, 2020

**Last Surveyed:** 2017

**Survey Team:** C. Lloyd, S. Aveson

### Lake Description

Moose Pond is 163-acres and has 3.3-miles of shoreline. It is located in the town of Saint Armand, Essex County and lies in the St. Lawrence Watershed. The team launched one canoe at the Moose Pond DEC boat launch located in Bloomingdale off Franklin Falls Road.

### Aquatic Invasive Plant Presence

No invasive plants were detected.

### Native Plant Biota

Comprehensive surveys of all native plants found within the lake were not prioritized in 2020 as this data has previously been collected in 2017. Species observed included: *Vallisneria americana* (eel grass), *Nuphar variegata* (spatterdock), *Potamogeton amplifolius* (large leaf pondweed), *Potamogeton Sparganium* spp. (bur-reed) and *Potamogeton natans* (floating-leaf pondweed).

### Aquatic Invasive Animal Presence

Three plankton tows were also conducted with no invasive zooplankton detected. Sediment sieves were taken to determine the presence of *Corbicula fluminea* (Asian clams). None were detected. *Cipangopaludina chinensis malleata* (Chinese mystery snail) were detected adjacent to the boat launch.

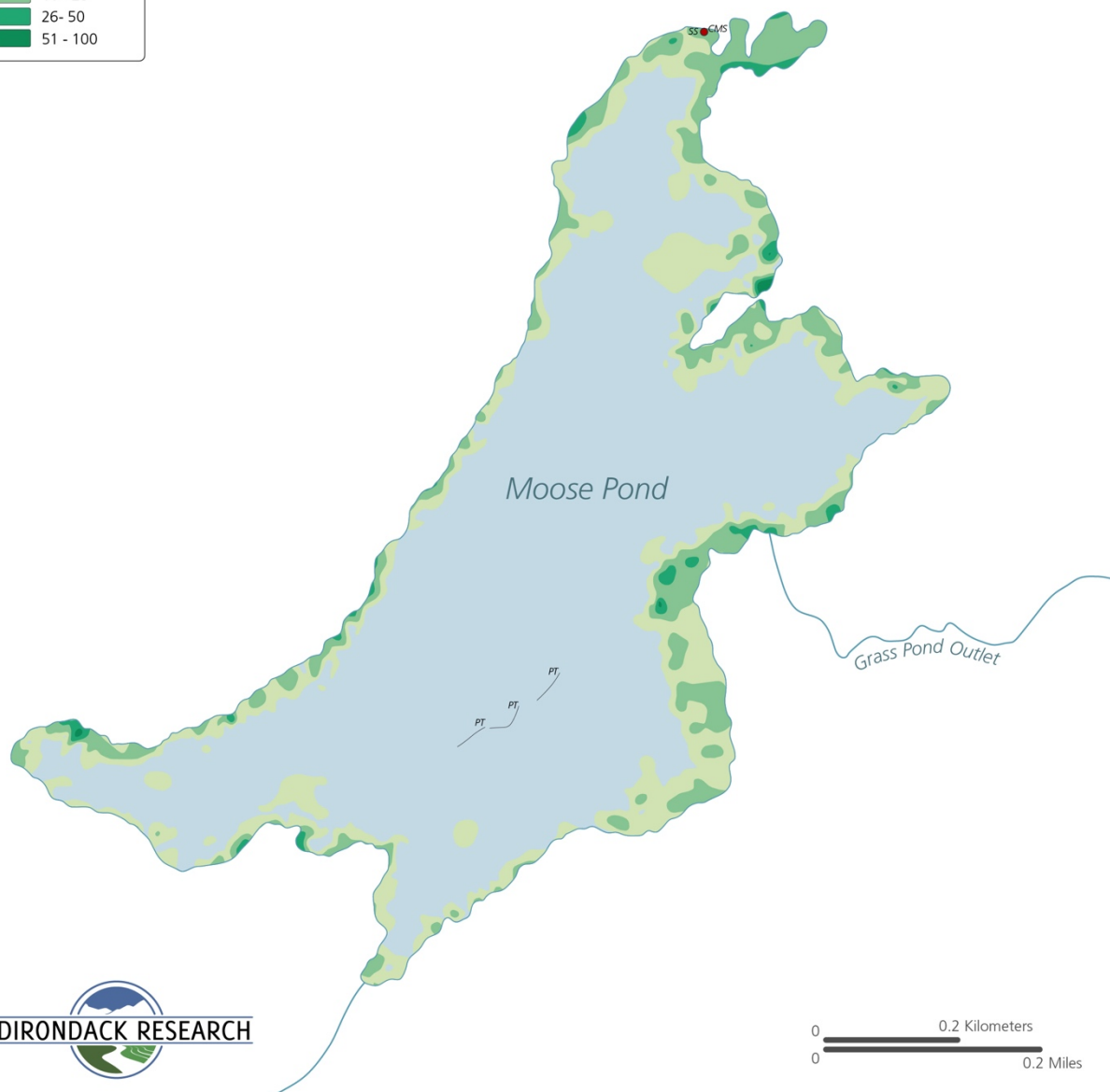
## Moose Pond Aquatic Plant Survey 2020

County: Essex      Date Surveyed: 8/17-18/2020  
 Town: St. Armand      AIS Bed Area (acres): 0  
 Lake Area (acres): 163      AIS Observed: CMS

PT Phytoplankton Tow      SS Sieve Sample  
 CMS Chinese mystery snail

### Native Vegetation Biovolume (%)

< 1  
 1 - 10  
 11 - 25  
 26 - 50  
 51 - 100



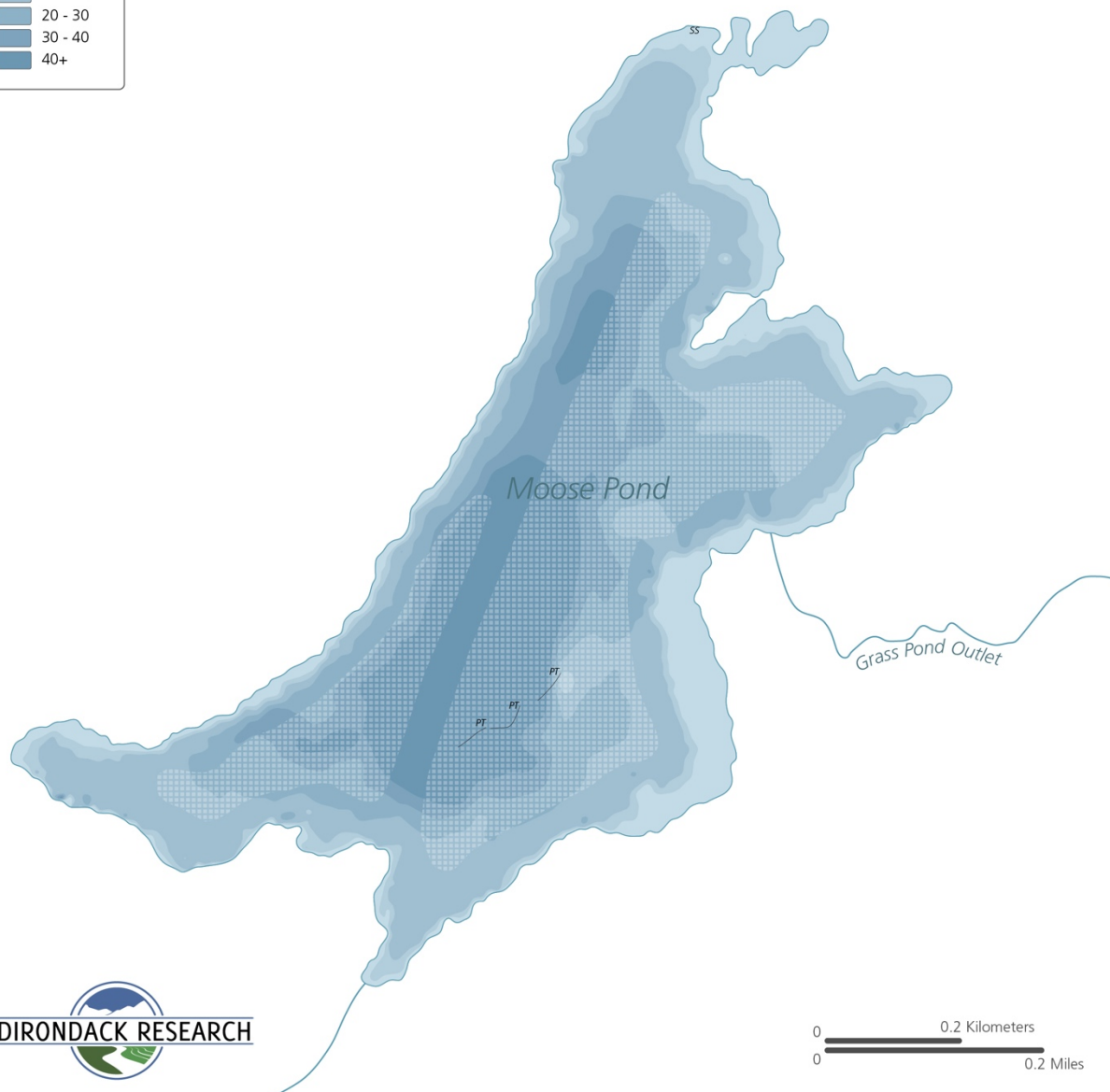
## Moose Pond Aquatic Plant Survey 2020

County: Essex Date Surveyed: 8/17-18/2020  
Town: St. Armand AIS Bed Area (acres): 0  
Lake Area (acres): 163 AIS Observed: CMS

PT Phytoplankton Tow  
SS Sieve Sample  
Excessively Interpolated

### Bathymetry (ft)


0 - 5  
5 - 10  
10 - 20  
20 - 30  
30 - 40  
40+



0 0.2 Kilometers  
0 0.2 Miles

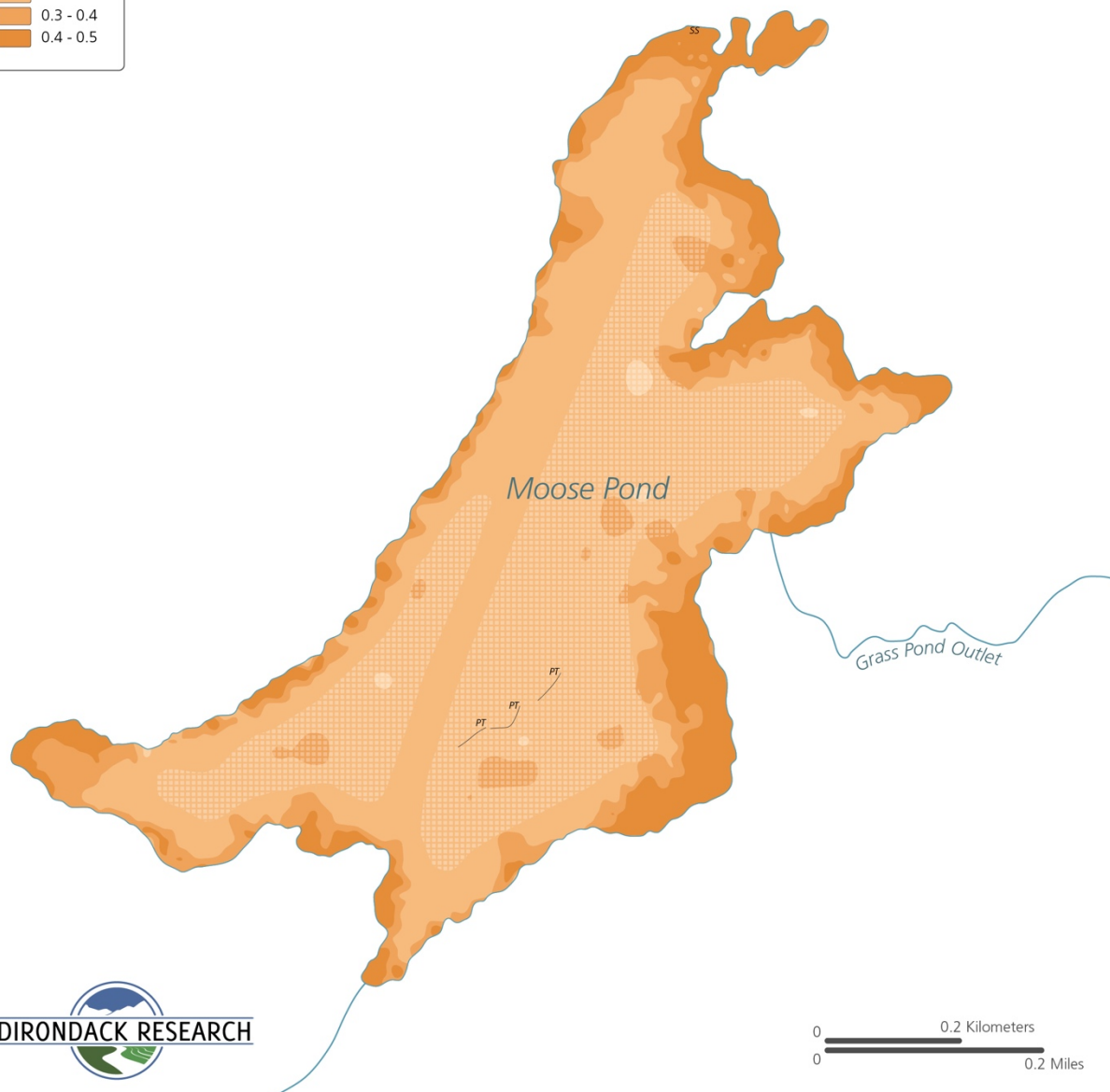
## Moose Pond Aquatic Plant Survey 2020

County: Essex      Date Surveyed: 8/17-18/2020  
 Town: St. Armand      AIS Bed Area (acres): 0  
 Lake Area (acres): 163      AIS Observed: CMS

PT Phytoplankton Tow      SS Sieve Sample  
 Excessively Interpolated

### Hardness

0 - 0.1  
 0.1 - 0.2  
 0.2 - 0.3  
 0.3 - 0.4  
 0.4 - 0.5



0 0.2 Kilometers  
 0 0.2 Miles