

## Weller Pond

**Survey Date:** August 19, 2020

**Last Surveyed:** 2017

**Survey Team:** C. Lloyd, S. Aveson

### Lake Description

Weller Pond is 177-acres. It is located in the town of Santa Clara, Franklin County and lies in the St. Lawrence Watershed. The team launched one motorboat at the Second Pond boat launch. The team then traveled through Lower and Middle Saranac Lake to reach Weller Pond.

### Aquatic Invasive Plant Presence

A single small patch of *Myriophyllum spicatum* (Eurasian watermilfoil) was located.

### Native Plant Biota

Comprehensive surveys of all native plants found within the lake were not prioritized in 2020 as this data has previously been collected in 2017. Species observed included: *Vallisneria americana* (eel grass), *Nuphar variegata* (spatterdock), *Nymphaea odorata* (white water lily), *Brasenia schreberi* (watershield), *Potamogeton amplifolius* (large-leaf pondweed), *Potamogeton richardsonii* (clasping-leaf pondweed), *Utricularia macrorhiza* (common bladderwort) *Sparganium* spp. (bur-reed).

### Aquatic Invasive Animal Presence

Three plankton tows were conducted with no invasive zooplankton detected.

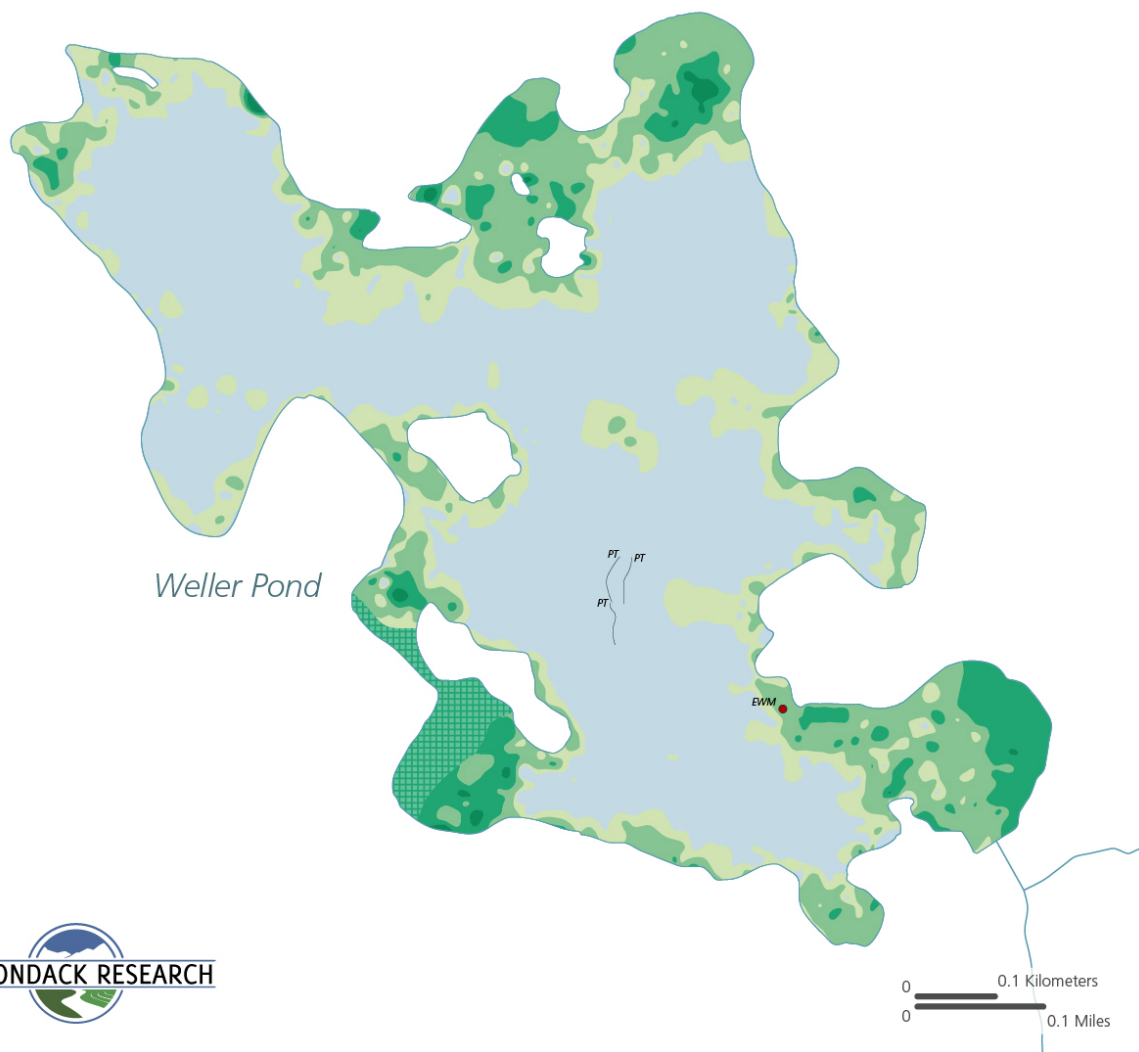
## Weller Pond Aquatic Plant Survey 2020

County: Franklin Date Surveyed: 8/19/2020  
 Town: Santa Clara AIS Bed Area (acres): 0  
 Lake Area (acres): 177 AIS Observed: EWM

PT Phytoplankton Tow  
 EWM Eurasian watermilfoil  
 Excessively Interpolated

### Native Vegetation Biovolume (%)

< 1  
 1 - 10  
 11 - 25  
 26 - 50  
 51 - 100



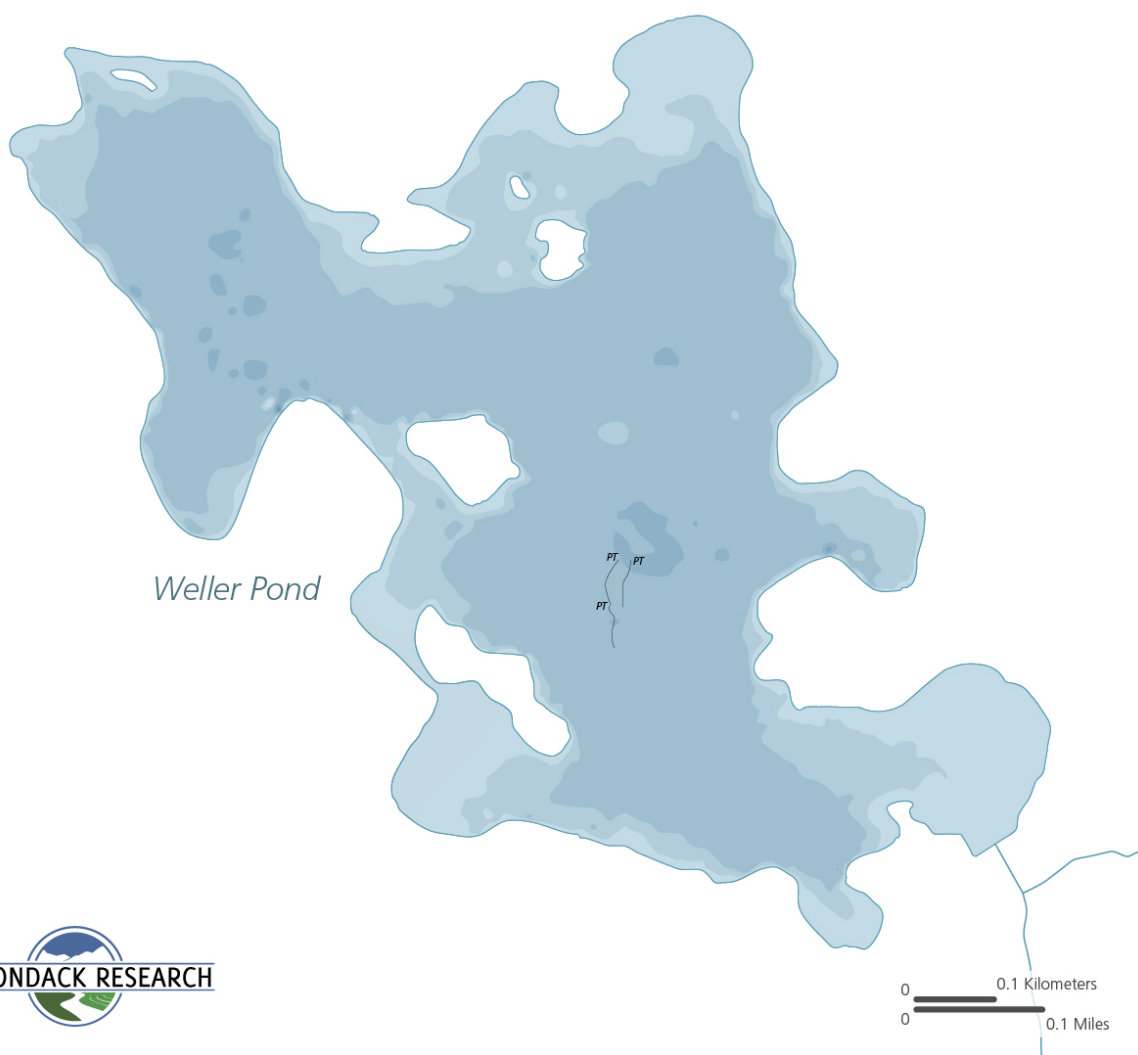
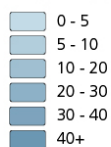
## Weller Pond Aquatic Plant Survey 2020

County: Franklin  
Town: Santa Clara  
Lake Area (acres): 177

Date Surveyed: 8/19/2020  
AIS Bed Area (acres): 0  
AIS Observed: EWM

PT  
Phytoplankton  
Tow

### Bathymetry (ft)



## Weller Pond Aquatic Plant Survey 2020

County: Franklin  
Town: Santa Clara  
Lake Area (acres): 177

Date Surveyed: 8/19/2020  
AIS Bed Area (acres): 0  
AIS Observed: EWM

 Phytoplankton Tow

 Excessively Interpolated

### Hardness

