

PROTECT ADIRONDACK TREES

MOVING FIREWOOD CAN
TRANSPORT TREE-KILLING INSECTS.

BUY IT WHERE YOU BURN IT.

If you're a camper heading out for a trip – or just getting firewood for your stove – do nature a favor. Don't potentially transport invasive species.



- ▶ Buy locally harvested or heat-treated firewood.
- ▶ Be aware of firewood regulations.
- ▶ Tell your friends not to move firewood.
- ▶ If you have already moved firewood, use it immediately. Do not take it home with you and do not leave excess firewood on site.

The forest will thank you.

**DON'T MOVE
FIREWOOD.org**



Forest insects and diseases kill thousands of trees every day. Keep your backyard, campgrounds and favorite places safe from these pests.

Prevention is the key. Buy firewood near where you will burn it. Don't move firewood when you travel, camp or visit another area.

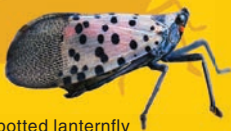


Inspecting tree damage caused by emerald ash borer beetles.

*Actual Size



Asian longhorned beetle



spotted lanternfly



emerald ash borer

PHOTO CREDITS: Tree inspection, Gwendolyn Craig, Adirondack Explorer 2020. Emerald ash borer, Pennsylvania Department of Conservation and Natural Resources, Bugwood.org. Asian longhorned beetle, J. Forman Orth, Massachusetts Department of Agricultural Resources. Spotted lanternfly, Lawrence Barringer, Pennsylvania Department of Agriculture, Bugwood.org.

Funding for this project was provided in part by the Environmental Protection Fund as administered by the New York State Department of Environmental Conservation.

**DON'T MOVE
FIREWOOD.org**



Department of
Environmental
Conservation



INVASIVE SPECIES
MANAGEMENT
ADIRONDACKS

The Nature
Conservancy



nature.org

For more information see: <https://ADKinvasives.com>