

Limekiln Lake

Survey Date: July 3, 2019

Last Surveyed: 2015

Lake Description

Limekiln Lake is 470.81-acres and has 6.57-miles of shoreline. It is located in the town of Inlet, Herkimer County and lies within the Black River watershed. The team launched one motorboat and one canoe with a trolling motor at the DEC Lake Eaton public campground boat launch on the northeast end of the lake.

Aquatic Invasive Plant Presence

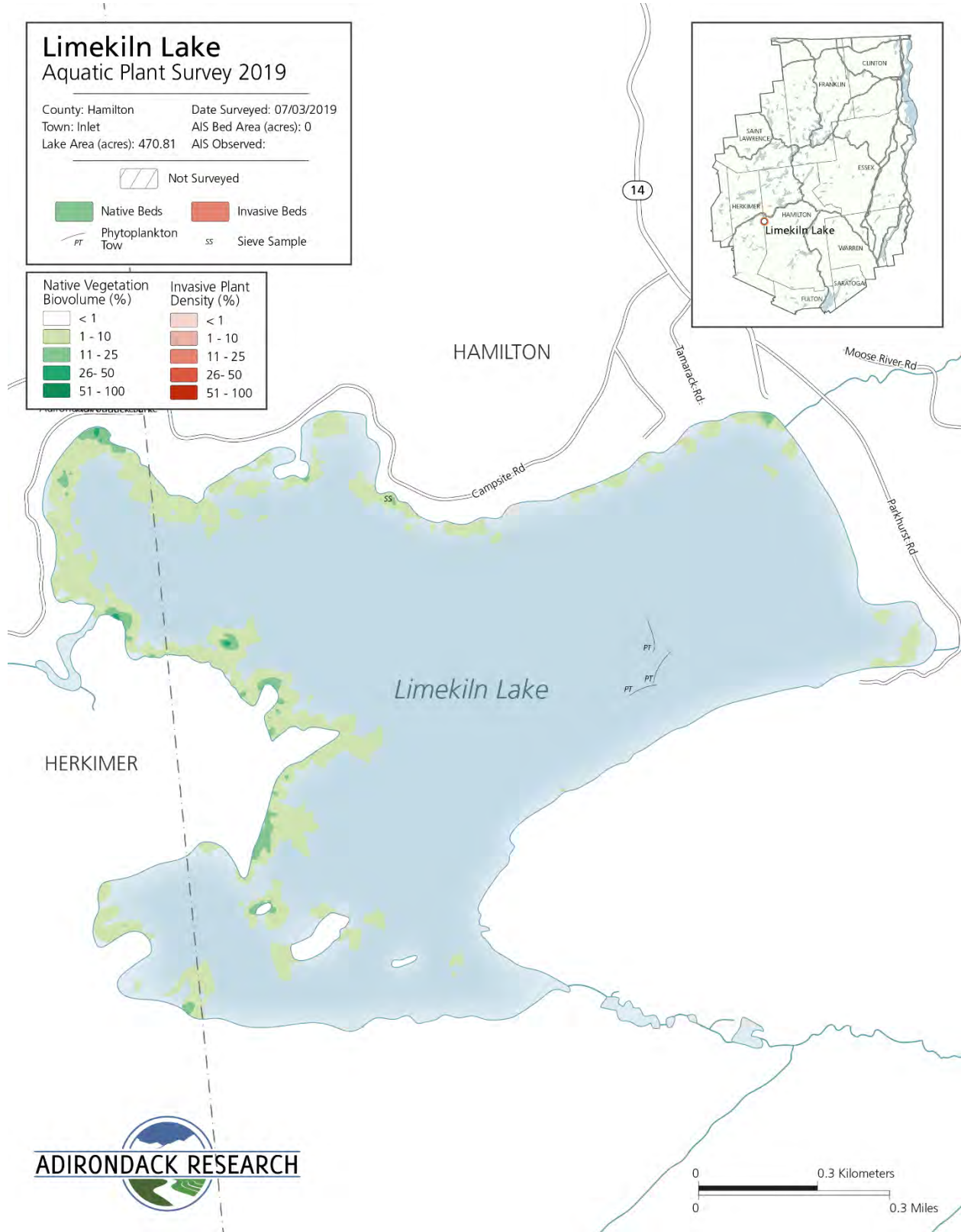
No invasive plants were detected.

Native Plant Biota

Comprehensive surveys of all native plants found within the lake were not prioritized in 2019. A combination of native floating and submerged plants was detected in Limekiln Lake. These species include: *Brasenia schreberi* (watershield), *Nuphar variegata* (yellow pond lily), *Nymphaea odorata* (white water lily), and *Eleocharis* spp. (hairgrass).

Aquatic Invasive Animal Presence

Sediment sieves were taken to determine the presence of *Corbicula fluminea* (Asian clams). None were found. Three plankton tows were also conducted with no invasive zooplankton detected.



ADIRONDACK RESEARCH