

Union Falls Flow

Survey Date: August 14, 2020

Last Surveyed: 2017

Survey Team: C. Vara, T. Firkins, S. Aveson, C. Lloyd, P. Bly

Lake Description

Middle Pond is approximately 1,654.73-acres and has 21.83 miles of shoreline. It is located in the town of Saranac Lake, Franklin County and lies in the St. Lawrence watershed. The team launched two motorboats at a private campground (McIntyre's), hard surface launch located on Alder Brook Road off of NYS Rt. 3 north of Vermontville.

Aquatic Invasive Plant Presence

Myriophyllum spicatum (Eurasian watermilfoil) and *Myriophyllum heterophyllum* (variable-leaf milfoil) were both recorded throughout the waterbody.

Native Plant Biota

Comprehensive surveys of all the native plants found within the lake, data has previously been collected in 2017. A combination of native floating and submerged plants were detected. These species include: *Brasenia schreberi* (watershield), *Nuphar variegata* (spatterdock), *Potamogeton amplifolius* (large-leaf pondweed), *Utricularia macrorhiza* (common bladderwort), *Nymphaea odorata* (white water lily), *Pontederia cordata* (pickerelweed), *Utricularia purpurea* (purple bladderwort), *Najas flexilis* (slender naiad), *Nitella spp.*, (nitella), *Potamogeton robbinsii* (Robbins' pondweed), *Vallisneria americana* (eel grass), *Isoetes spp.*, (quillwort), *Potamogeton praelongus* (white-stem pondweed), *Potamogeton richardsonii* (clasping-leaf pondweed), *Sparganium angustifolium* (narrow-leaf burr-reed), *Schoenoplectus subterminalis* (water bulrush), *Elodea nuttallii* (slender waterweed), *Phragmites spp.* (common reed), *Chara spp.* (muskgrass), and *Sparganium americanum* (American burr-reed).

Aquatic Invasive Animal Presence

Sediment sieves were taken to determine the presence of *Corbicula fluminea* (Asian clam), none were found. *Cipangopaludina chinensis* (Chinese mystery snail) were found on the bottom of the lake, as well as floating. Three plankton tows were also conducted and no invasive plankton were discovered.

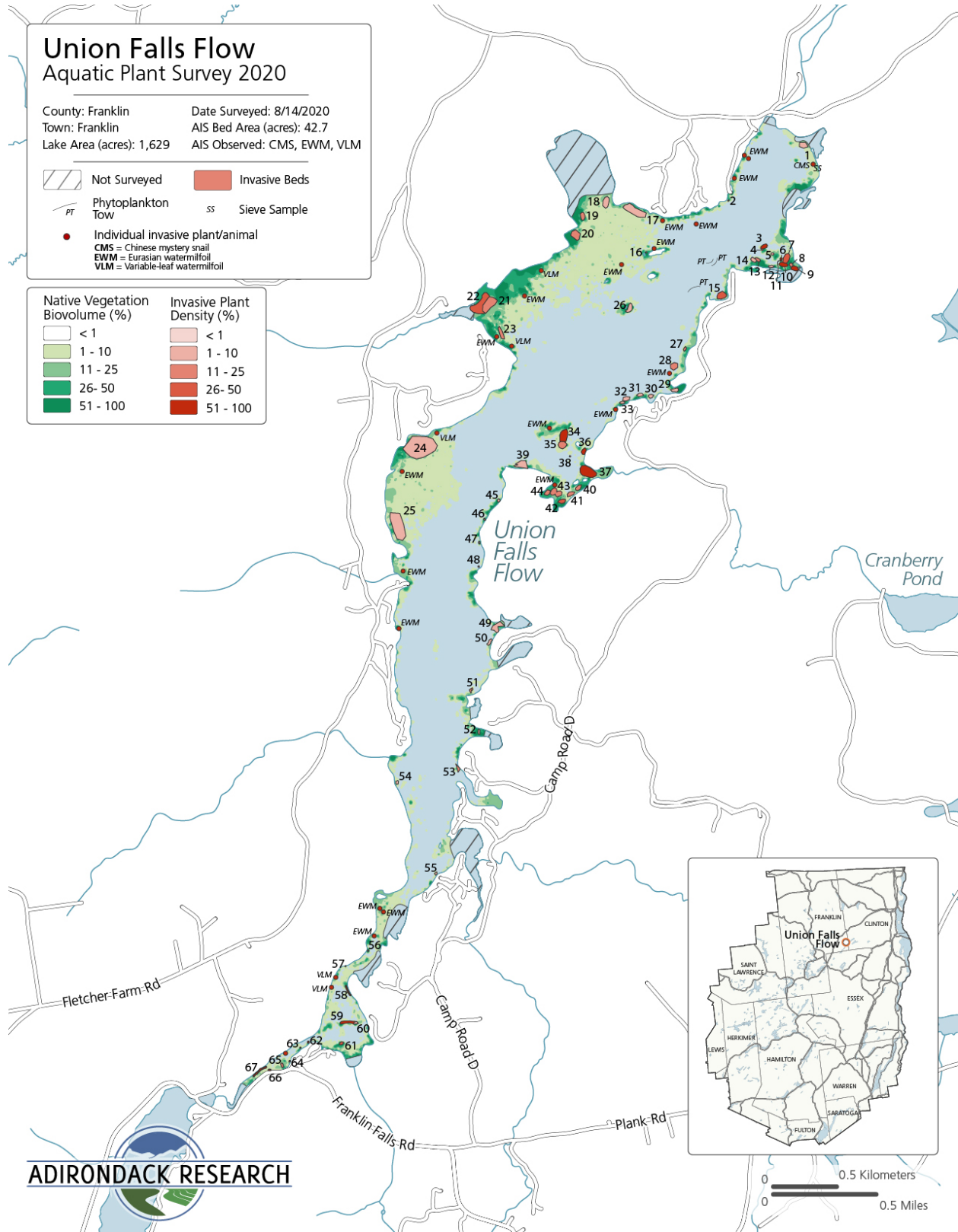
Union Falls Flow

Invasive Species Percent Cover (See map on adjacent page)

Eurasian watermilfoil				Eurasian watermilfoil				Variable-leaf watermilfoil			
Bed	Size (Ac.)	Size (Sq. Ft.)	% Cover	Bed	Size (Ac.)	Size (Sq. ft)	%	Bed	Size (Ac.)	Size (Sq. Ft.)	% Cover
2	0.02	953.65	1-10	37	2.19	95295.9	51-100	1	0.59	25907.20	1-10
3	0.36	15617.33	51-100	39	1.08	47072.0	1-10	4	0.04	1617.36	1-10
5	0.09	3968.35	1-10	40	0.34	14816.1	11-25	8	0.16	7081.02	11-25
6	0.06	2666.93	51-100	41	0.38	16342.1	11-25	22	3.55	154658.11	26-50
7	0.76	32988.33	26-50	42	0.37	16294.3	26-50	26	0.55	23745.83	1-10
9	0.42	18440.73	51-100	43	0.99	43034.1	11-25	35	0.73	31953.33	11-25
10	0.47	20359.46	51-100	44	0.35	15288.3	11-25	36	0.34	14674.57	51-100
11	0.03	1140.19	1-10	45	0.10	4451.47	1-10	38	0.02	1028.91	1-10
12	0.16	7046.25	1-10	46	0.01	515.46	1-10	39	1.08	47072.09	1-10
13	0.22	9467.92	11-25	48	0.03	1218.79	1-10	47	0.01	602.77	1-10
14	0.30	12939.75	1-10	49	0.99	43183.4	1-10	56	0.01	332.96	1-10
15	0.84	36512.11	26-50	50	0.25	11102.7	1-10	57	0.00	31.26	26-50
16	0.02	1038.21	1-10	51	0.15	6341.73	11-25	58	0.08	3349.69	51-100
17	2.40	104456.17	1-10	52	0.13	5459.32	1-10	59	0.62	27192.55	51-100
18	0.86	37428.82	1-10	53	0.20	8901.05	11-25	62	0.02	653.63	51-100
19	0.44	19020.84	11-25	54	0.12	5248.21	1-10	63	0.00	136.20	26-50
20	1.00	43716.89	11-25	55	0.08	3505.19	1-10	64	0.01	229.90	26-50
21	2.07	90260.80	11-25	60	0.12	5127.63	1-10	65	0.14	5972.99	11-25
23	0.57	24656.45	11-25	61	0.14	6162.32	26-50	66	0.02	811.33	26-50
24	8.55	372527.09	1-10					67	0.17	7190.00	51-100
25	4.49	195458.52	1-10								
27	0.13	5582.21	11-25								
28	0.65	28339.75	11-25								
29	0.34	14892.59	1-10								
30	0.23	10099.68	1-10								
31	0.24	10435.93	1-10								
32	0.38	16745.42	1-10								
33	0.16	6934.72	1-10								
34	1.25	54289.91	51-100								

Asian Clam	Spiny Waterflea
Present (Y/N)	Present (Y/N)
No	No

Bold = bed with Eurasian watermilfoil and Variable-leaf watermilfoil



ADIRONDACK RESEARCH

